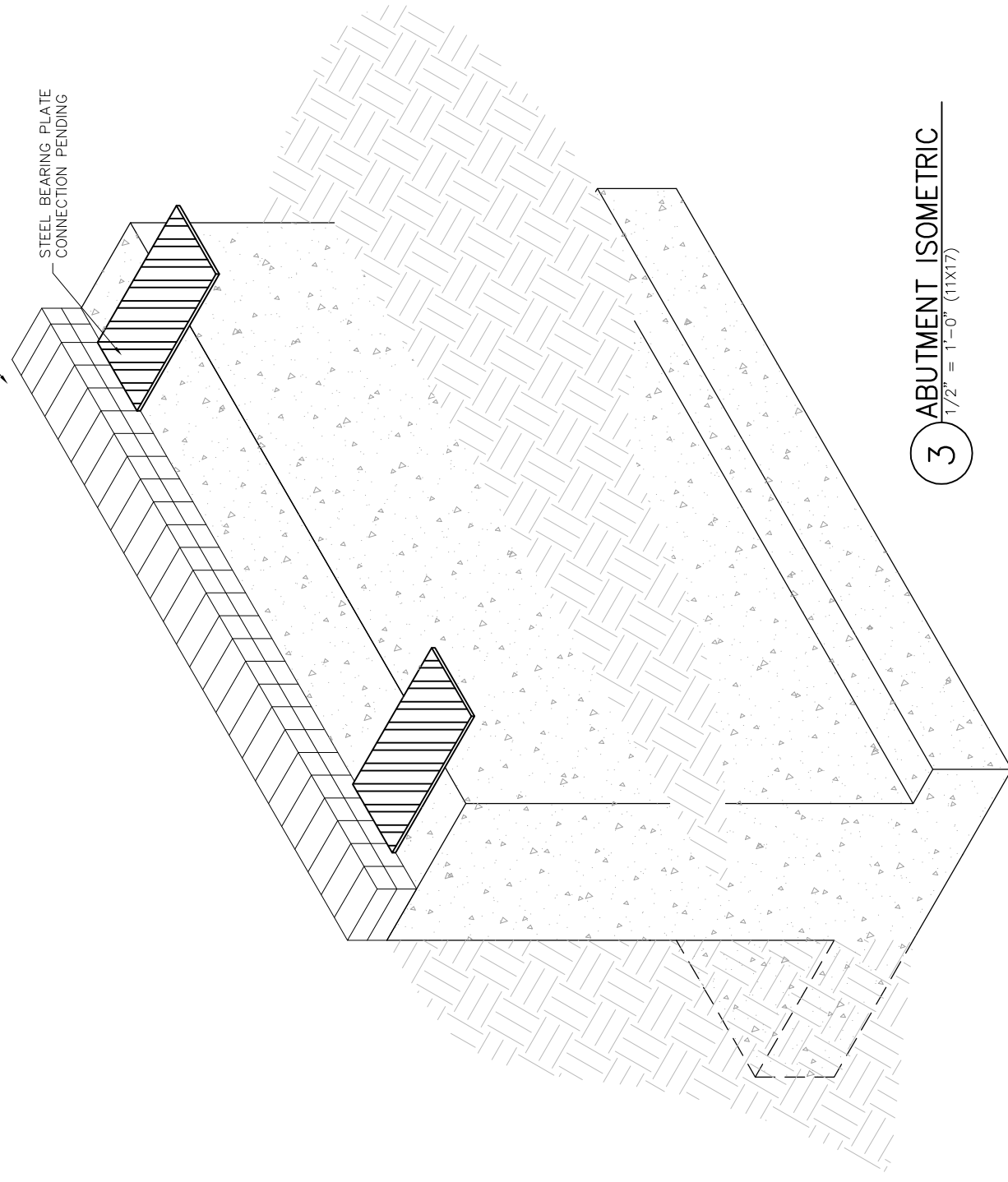


BLOCK SPACER BETWEEN
BRIDGE DECK AND RAMP

STEEL BEARING PLATE
CONNECTION PENDING

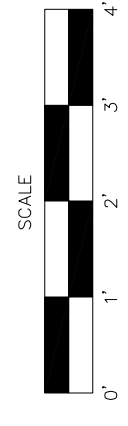


3 ABUTMENT ISOMETRIC
1/2" = 1'-0" (11X17)

NOTES

MEASUREMENT	WEST ABUTMENT	EAST ABUTMENT
A	4'-0"	~2'-6"
VOLUME (cu.yd.)	4.0	3.25

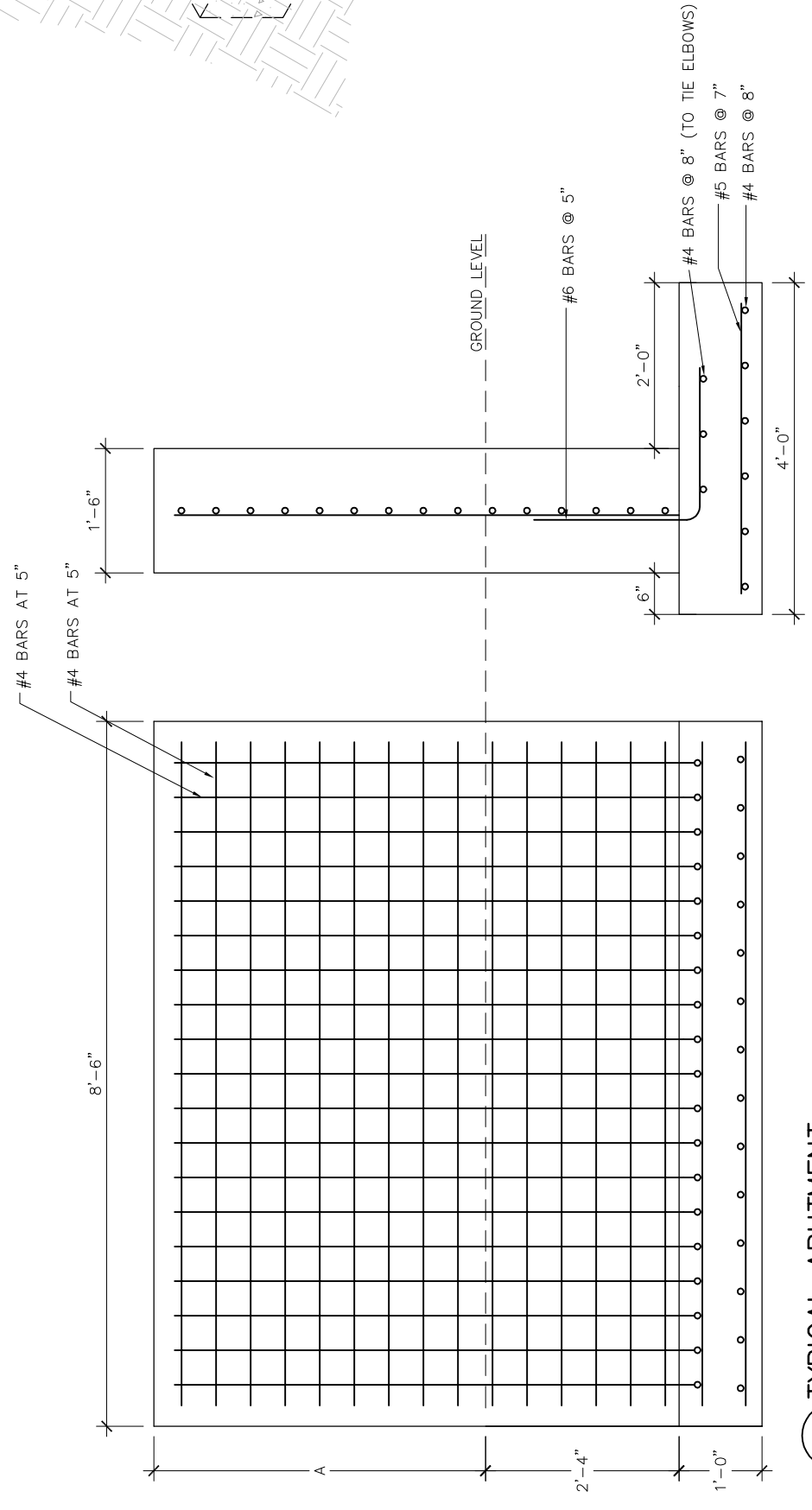
- 3000 OR HIGHER PSI CONCRETE
- GRADE 40 REBAR
- 3' OF COVER OVER ALL BARS



STUDENT "KISSING" BRIDGE
ABUTMENT DETAIL

scale: 1/2" = 1'-0" (11X17)
date issued: MAY 14, 2004
DRAFT

revision #: 6
sheet number: F-1



2 TYPICAL ABUTMENT
1/2" = 1'-0" (11X17)